

DIGITAL ZOOM STEREO

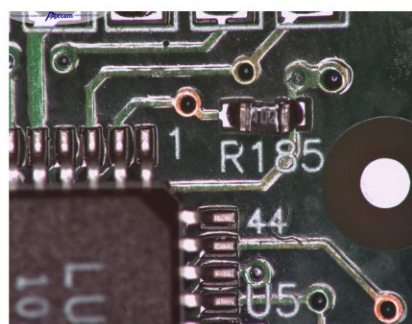
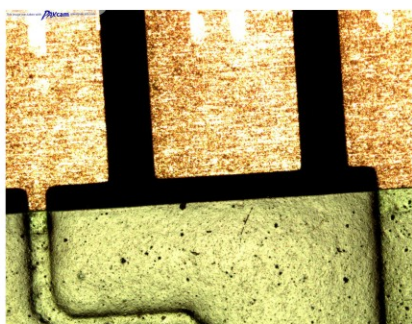
Research Microscopy for Professionals



LABOVISION™

Worlds Within™

SPECIFICATIONS



STAND	Dual light stable stand with focusing knob and built in slip clutch
OBSERVATION TUBE	Trinocular observation head inclined 45°, IPD 55-75 mm, with Dioptic adjustment on left ocular . Built-in camera and digitizer module
EYEPIECES	WF 10X/20mm with Eye-guards.Anti Mould Treated. Optional WF 15x/16mm, WF 20x/12mm
ZOOM RATIO	Continuous Zoom Ratio: 1: 6.4
MAGNIFICATION	0.7x-4.5x (7x to 45x with 10x eyepiece)
ILLUMINATION	Built in illumination both for incident light 15W Halogen, with variable intensity control and sub- stage transmitted fluorescent lamp 7 W. Both lights can be used individually or simultaneously.
IMAGE DEVICE	1/3" CCD Camera
RESOLUTION	Live/Still image resolution 720 x 576 pixels (PAL), 720 x 480 (NTSC)
LIGHT SENSITIVITY	1 Lux
INTERFACE	USB ver 2.0, S-Video & RCA
SOFTWARE	dgsoft ProMED™ Ver. 5.06/dgsoft ProMAT™ Ver. 4.06 Image Analysis Software, as per application, Calibration Slide Inculded.
SYSTEM REQUIREMENTS	CPU : Pentium IV or Higher, RAM : 512 MB or more, Hard Disk Space : 100 MB or more, Windows 98SE/ME/2000/XP, CD-Rom drive and USB 2.0 port
ACCESSORIES	Auxiliary objective 0.5x;1.5x; 2.0x. PL Stand (Slim Base) without light ,Boom stand with Single bonder arm



Corporate Office:

LABEX K.K. INTERNATIONAL
 # 128, H.S.I.D.C. Industrial Estate
 Ambala Cantt. 133 006 Haryana.
 Tel : + 91-171-2699 468
 Fax: + 91-171-2699 421
 E-mail: sales@labovision.com
 website : www.labovision.com

